

SepTiC
Sepsis Trials in Critical Care



Imperial College
London

SepTiC API Forum

11th February 10am-11am

With the SepTiC APIs, Sub-Investigators and SepTiC
Trial Management Team

Featuring Dr Asher Akram (API) from Kings College
Hospital

The SepTiC APIs

Karthikkeyan Rajachandran	Charing Cross Hospital
Benjamin Dabson	Hammersmith Hospital
Samuel Vilches	St George's Hospital
Vasiliki Kalogianni	St George's Hospital
Elin Stevenson	James Cook Hospital
Anita Jones	Russell's Hall Hospital
Natalie Renwick	Russell's Hall Hospital
Asher Akram	Kings College Hospital
Fahad Zahid	Kings Mill Hospital
Naomi Blaikie	Derriford Hospital
Mario Zahgar Anwar Shehata	St George's Hospital
Alastair Thomas	Nottingham University Hospitals (City Hospital)

Aims of the Associate PI Scheme

- To integrate clinical research into clinical training
- To develop doctors, nurses, and healthcare professionals to be the PIs of the future
- To engage, recognise, and promote healthcare professional engagement in NIHR portfolio research, consistently
- To increase opportunities for patients to be involved in high quality research to ultimately improve care



Associate PI Scheme Trainee process

Check your eligibility

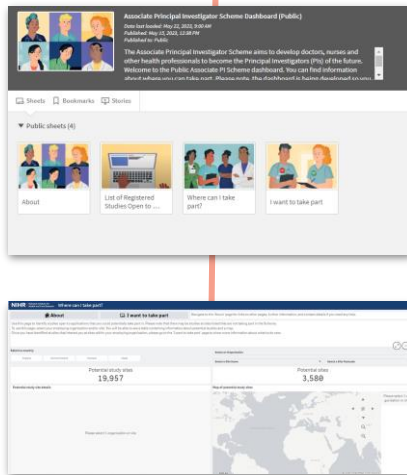
Before you begin, check you meet the trainee eligibility criteria - Full details can be found on the **NIHR Associate PI Scheme Website:** www.NIHR.ac.uk/AssociatePIScheme

Applying to be an Associate Principal Investigator



Find a study

To identify a study that is registered onto the Associate PI Scheme and open to recruitment at your local site, visit the **Associate PI Scheme dashboard**, and the *'Where can I Take Part?'* tool.



Complete the Application form

Applicants must gain prior approval from their Local PI.

Complete and submit the Associate PI Trainee application form.

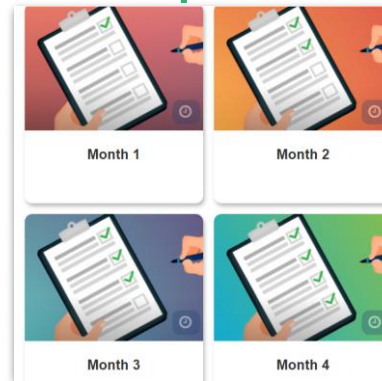
Trainee applicant details

Applicant primary email address	<input type="text"/>
Confirm application primary email address	<input type="text"/>
Applicant first name	<input type="text"/>
Applicant last name	<input type="text"/>
Select your current professional title	<input type="text" value="None"/>

I confirm that in my current role I am not funded to work on the study I want to apply to.

Access to online learning

Once successfully registered onto the Scheme, you will be given access to the **Associate PI Scheme Learning Pathway in NIHR Learn.**



Complete Associate PI Checklist

The Associate PI Trainee works alongside their Local PI for **6 months**. The Local PI acts as a mentor during their time on the Scheme.

The Associate PI trainee fills in their checklist as they go, and completes the Associate PI Scheme Learning Pathway in NIHR Learn.

Certificate awarded

The Checklist gets signed off by Local PI and National Study Coordinator.

The Associate PI trainee must then **Submit their completed and fully signed Checklist.**

Certificate is issued, officially confirming 'Associate PI' status.

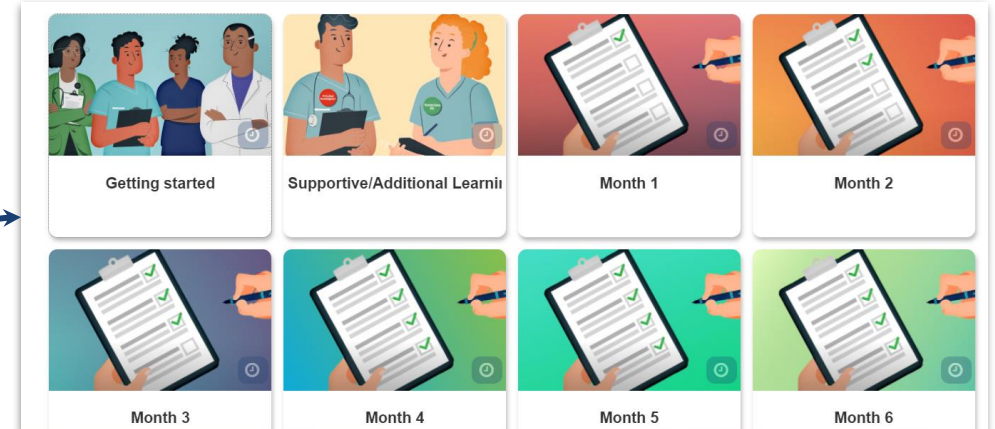


Associate PI Scheme - Checklist Activities

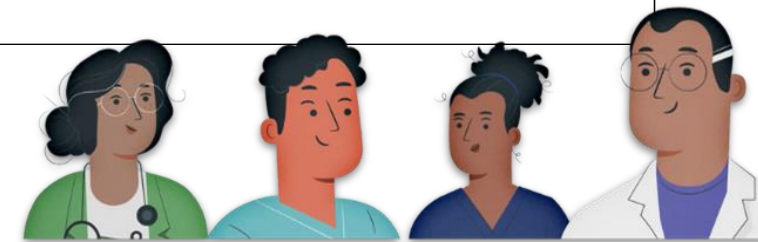
What does the Checklist cover?

- Signature on study-specific delegation log
- Dissemination to the department
- Engagement with staff, research team meetings (Diary of research team meetings)
- Site log, protocol amends, data returns and quality
- Train staff (GCP, protocol)
- Screening logs, recruitment/consent of patients or facilitating consent of patients
- Deputising for PI
- PPI activities

Activity is evidenced via an online Checklist hosted on NIHR Learn



Mandated activities	
The 12 activities below must all be engaged with during your time on the scheme - answer the questions below.	
1	<input type="checkbox"/> I confirm I have acted as a member of the research team and signed the study-specific site delegation log or site contact information as appropriate.
2	<input type="checkbox"/> I confirm I have worked with the PI to ensure the delegation log / site contact information has been correctly completed for each member of the research team.
3	Outline how you have assisted in disseminating the study in your local environment this should include engaging with relevant departments.





API Checklist Activities Examples



Outline how you have assisted in disseminating the study – some suggestions below:

- Putting up SepTiC Posters in recruiting wards
- Social media to promote study to colleagues
- Forwarding newsletter to colleagues
- Engagement with staff, research team meetings (Diary of research team meetings)
- PPI activities

Describe a presentation you have given, some suggestions below:

- Present in API forum
- Present in SepTiC monthly webinars

Email septic@imperial.ac.uk if you are interested and we can help you get started!

Duties of an API in The SepTiC Trial



- Regular checks to ensure appropriate participants were screened for inclusion and recruited to the study
 - Completion of the screening log. Reiterate the importance of regular screening.
 - Consider reasons for excluding patients e.g. patients missed due to the 24-hour window for inclusion from ICU admission
- Recruiting/consenting patients or facilitating consent of patients
- Deputising for PI
- Protocol amendments
 - Ensure the study team are trained on the current study amendment

SepTiC Trial with Dr Asher Akram (API)

Screening

- Daily screening with ACERT
- Patients are flagged to Research team and team proactively follow the patient.

Randomisation

- Support from SEPTIC Team.
- Very Encouraging and Engaging
- Promptly answers all the queries.

King's College Hospital 
NHS Foundation Trust

Consent

- Patients tend to be happy for retrospective consent
- Consent over phone and in person in wards

Activity

- Safety flag note (WBC) – In EPIC
- Escalation to team by Nurses and residents if any acute physiological change.

Follow Up

- D90, D180, 1yr
- Total 8 Patients: 1RIP/ 7Pts

Checklist

- Elaborated and self-explanatory Check list
- Involvement in Checklists.

We open the floor to

Discussion & Questions

What do you want to get out of the API Forum?



SepTIC
Sepsis Trials in Critical Care



How to get involved

Go to the NIHR Associate PI Scheme Website:
www.NIHR.ac.uk/AssociatePIScheme

**For anyone who would
like to be an API**

To register a study, submit an
[Application Form on NIHR Learn](#)



Study Team Applications

To register to be an Associate PI,
submit an [Application Form on NIHR
Learn](#)



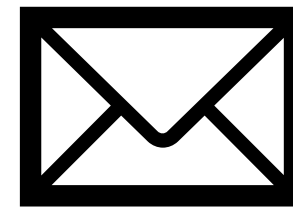
Associate PI
Trainee Applications



Before you get started, we highly
recommend watching the “How
to” videos [available here](#)



How to apply Videos,
Resources & FAQs



**CONTACT
US**

Email – septic@imperial.ac.uk

Website – <https://septictrial.co.uk/>

Twitter (X) - @septictrial

YouTube – Critical Care Trials at Imperial

We hope the SepTiC API Forum can be a place where APIs take initiative, interact and discuss about the SepTiC Trial together.

We are happy to facilitate and set-up future API Forum Meetings if the SepTiC APIs would find this beneficial!